



FPGWORLD.COM

CREATE SOMETHING EXCEPTIONAL

Multi-site and Corporate
food and beverage display.

Re-imagined by you.

ISOform 
create something exceptional





INNOVATE, DON'T FOLLOW.
BE UNIQUE, STAND OUT, BE DIFFERENT.
CREATE SOMETHING EXCEPTIONAL.

BE UNIQUE

Create a display that is entirely yours.
A display that reflects your brand, your identity.

Change your display in an instant to reflect new menus.
Create new excitement, keep one step ahead.

Build a display to meet **your** needs.
There are no compromises – it's the perfect display.

Isoform. It's food and beverage display.
Re-imagined by you.





FUTURE-PROOF YOUR DISPLAY.
RECONFIGURE AND REFRESH IN NO TIME.
AT ANY TIME.

BE FRESH

Self serve, full serve, open front, sliding doors – switch between configurations as your sales grow or menus change.

Split shelves, add pod arms, change shelf colour, add trays, swap large bowls for small bowls – **Isoform** is changed by you, saving you time and money.

Isoform is a truly future-proofed modular system, with globally-compliant components designed to interchange seamlessly.

The result is an **unrivalled versatility** to design each display to complement your brand, your menu, your offers.




A TRUE
INNOVATION
IN FOOD &
BEVERAGE
DISPLAY.



GUARANTEE
GUARANTEED
COMPLIANT
CORE PRODUCT
TEMPERATURE
FOR THE LIFE OF
THE EQUIPMENT.
Ryan Ward
Design
Manager

ISOform
create something exceptional



by **FPG**

Create a point of difference with our pod display* and shelving systems*.

Stop them in their tracks by breaking up horizontal lines of product – create variations in height; use small, medium or large bowls and platters; tilt the bowls; bring forwards or push backwards. Create interest. Disrupt and amaze.

The pod display system accepts displayware of all sizes – you can use **Isoform** bowls and platters, or even use your own.

*Patent pending.



GUARANTEE
CREATING PRODUCTS THAT ARE THE BEST AVAILABLE IN THE CATEGORY.
 Damian Connolley
 Operations Manager



world-first innovation

Cutting-edge display need cutting-edge displayware.

The bowls, trays and platters designed for **Isoform** are available in melamine, ceramic, wood, acrylic and glass – giving you true versatility in designing your displays. Choose from our extensive range, or work with our designers to create your own look and feel.

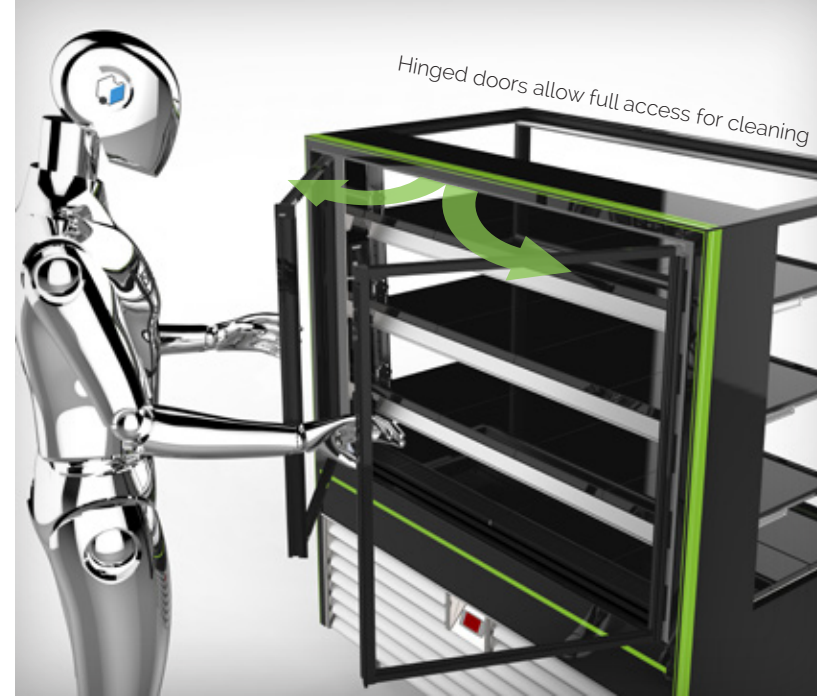
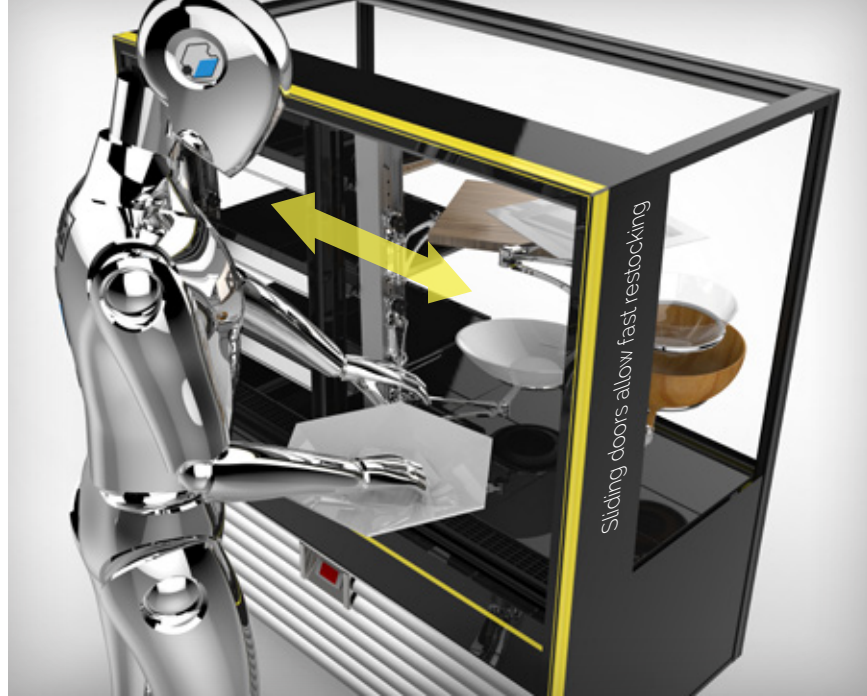
Melamine affords a sophisticated look with gloss finish material that's both robust and hard-wearing – and it's dishwasher safe.



Our sliding/hinged doors allow unprecedented access

Isoform doors offer the best of both worlds – they slide on heavy duty linear glides to allow smooth access for both customers and staff, AND they are hinged on a quick release swing system for full width access to the cabinet for restocking or cleaning. There's no heavy glass needs to be removed – it's a fast and easy operation that saves both time and money, and eliminates the risk of injury.

Or if you'd prefer, our tilting front door option also allows easy access for cleaning the inside front of the cabinet.



GUARANTEE
WE CREATE HIGH ENERGY EFFICIENT AND COMPLIANT APPLIANCES.
Colin Rose
Design Engineer



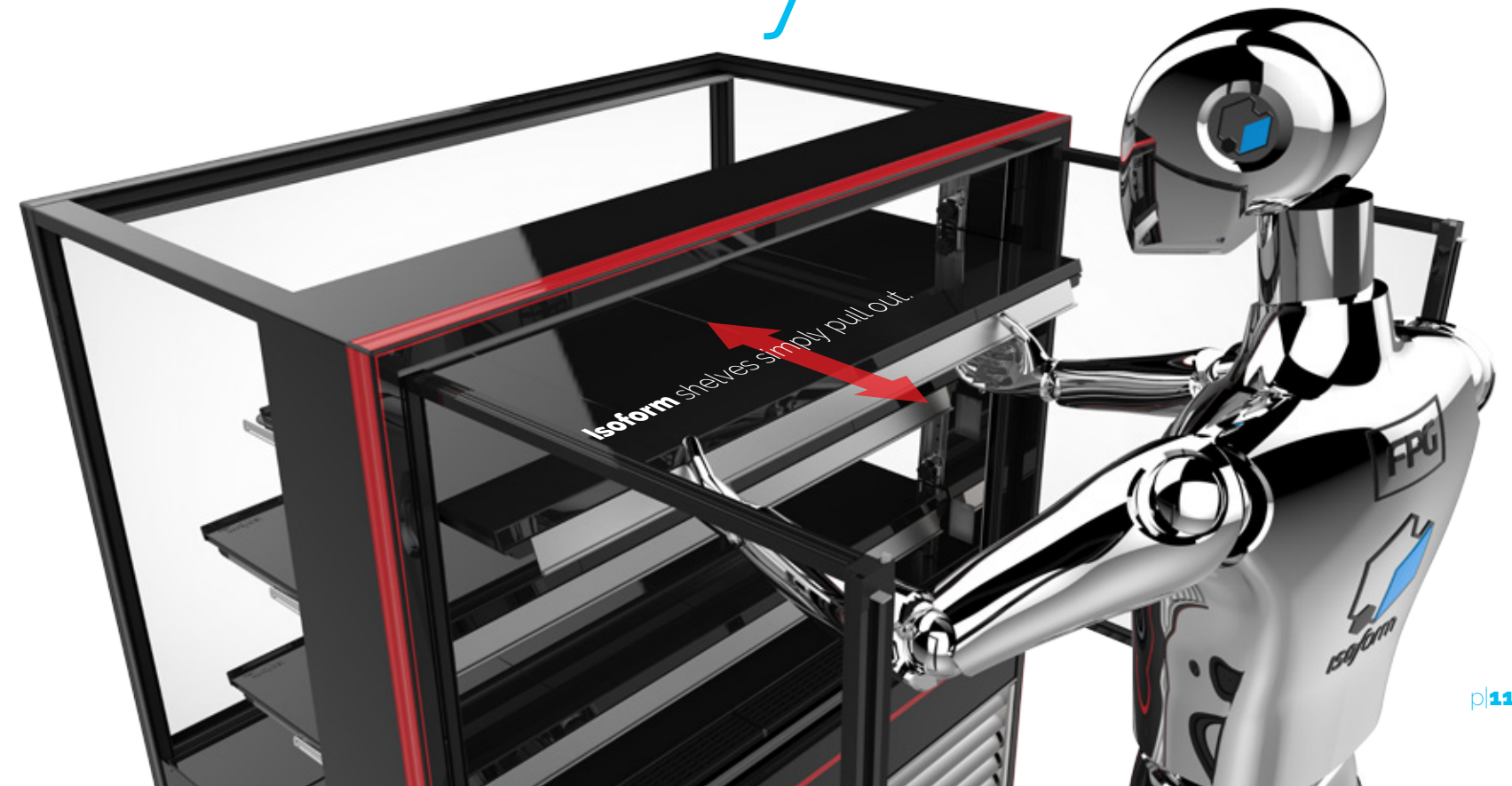
intelligent functionality

Ultra-flexible shelving for easy re-stocking and cleaning

Isoform shelves are unique in that they simply pull out – there's no dismantling the door frames to remove them.

And our flexible system allows full width shelves or a split display with differing layouts on each side of the cabinet – ideal for cross merchandising, or when adjusting for season or trading volume.

The shelves adjust in height and angle while in place – and they're all double sided for an even greater level of design and tone flexibility.

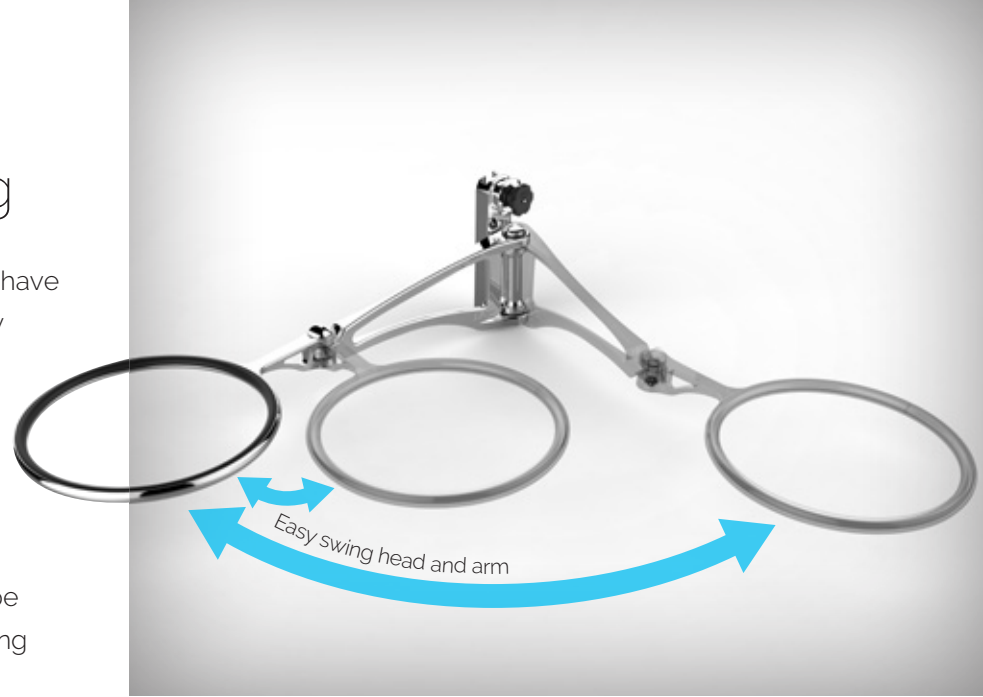


Infinitely adjustable display elements keep sales moving

Our cleverly adjustable dividers and upstands allow you to have total control over your stock positions, allowing your display remain impressive even when stocks run down.

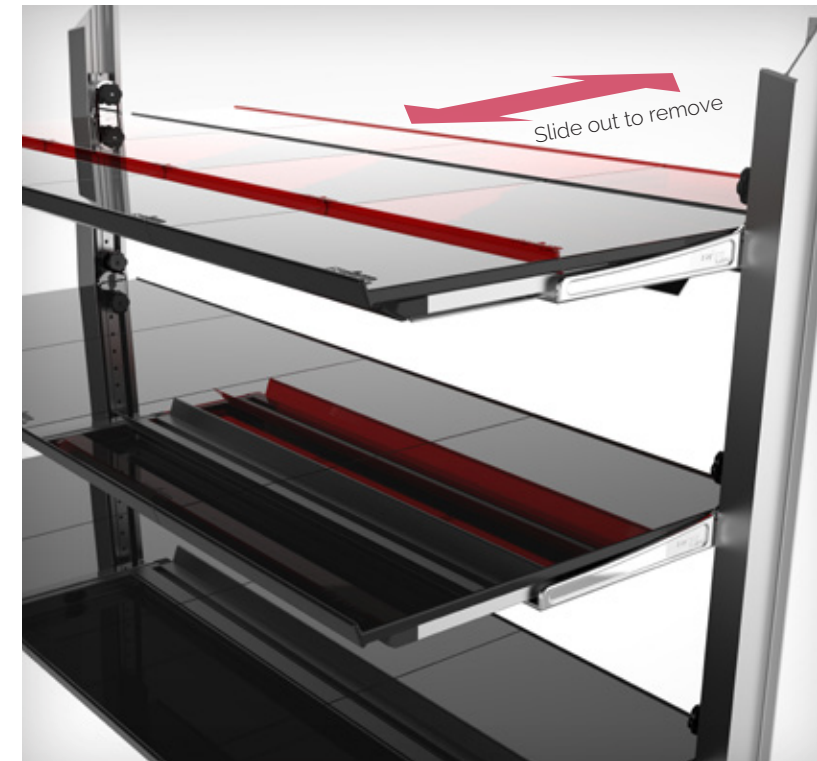
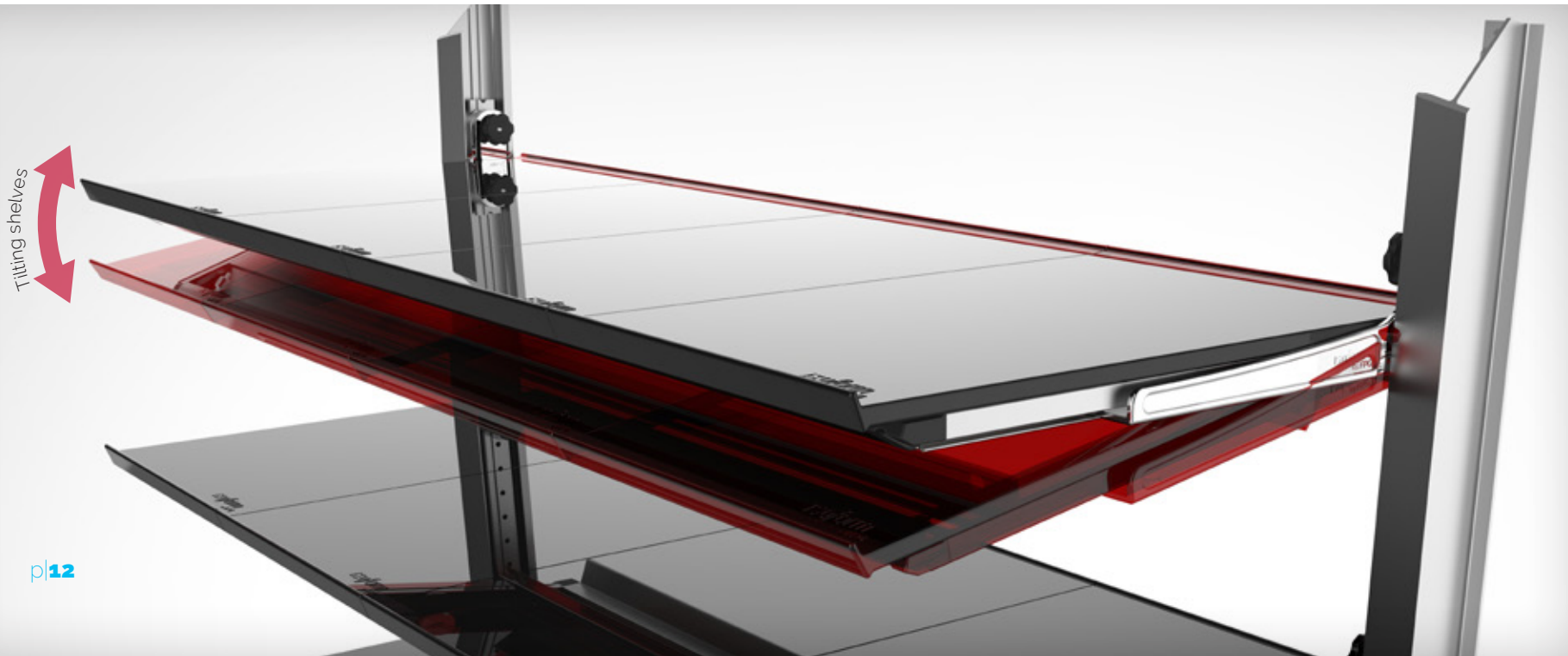
The pod arms tilt and slide so smoothly you can change the look and capacity of your display instantly and as often as you need to reflect your menus.

Clip-on ticketing system caters for virtually any size or shape price notice, and it's so simple to create cross-merchandising displays to help you sell more.



exceptional flexibility

GUARANTEE
DELIVERING QUALITY AND COMPLIANT PRODUCTS THAT WORK.
Euan Robertson
 Production Engineering Manager



Every element of Isoform has been evaluated, designed and manufactured for optimised performance and reliability.

Fast, Easy Cleaning

All major parts can be disassembled by your staff and cleaned in the dishwasher – no more lifting heavy doors, and no risking injury or breakage. All areas that need cleaning, including the filters, are easily accessible by your staff so there is no waiting around for a contractor to clean your cabinet, and no paying for one either!

Lowest Cost of Life

Isoform is extremely energy efficient – brushless EC fans ensure power consumption is minimised and our innovative use of

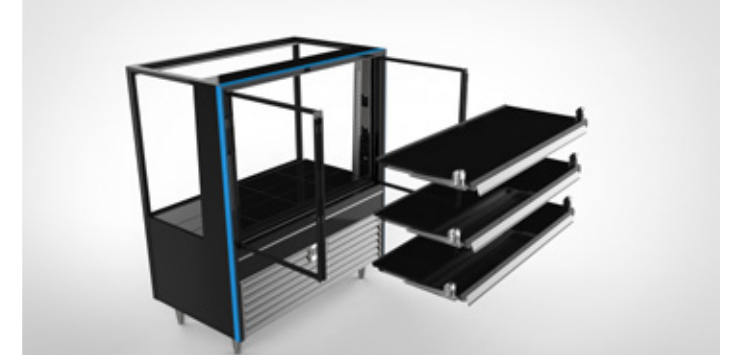
aerospace composites, extrusions, double glazing and passive thermal breaks ensure insulation is optimised.

Plus, LED lighting system couples best-in-class rendered light in heated and chilled displays with huge energy savings.

All of these steps, along with our relentless testing, mean that preventative maintenance is minimised and that **Isoform** can guarantee core product temperatures* – 24 hours a day, 365 days a year – for the lifetime of the equipment.

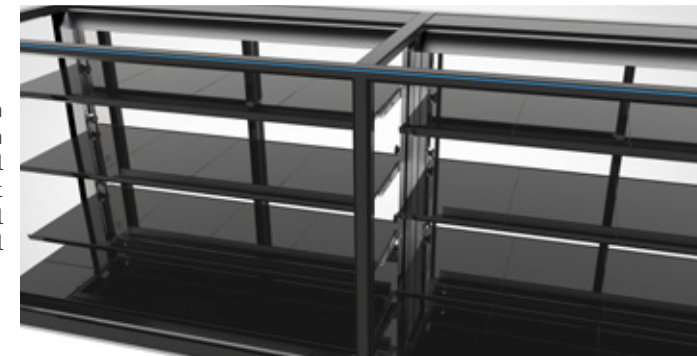
*within set operating conditions

Convert from sliding doors to tilting door simply and quickly



Easily swap from shelving to pod arm displays

Revolutionary thin dividers maintain the best thermal properties whilst allowing optimal product visual



GUARANTEE
LOWEST OVER ALL TOTAL COST OF LIFE APPLIANCES.
 Jared Vaughan
 Group General Manager



operational excellence

Cost of life

Typical savings with Isoform over the 8-year life of a refrigerated cabinet

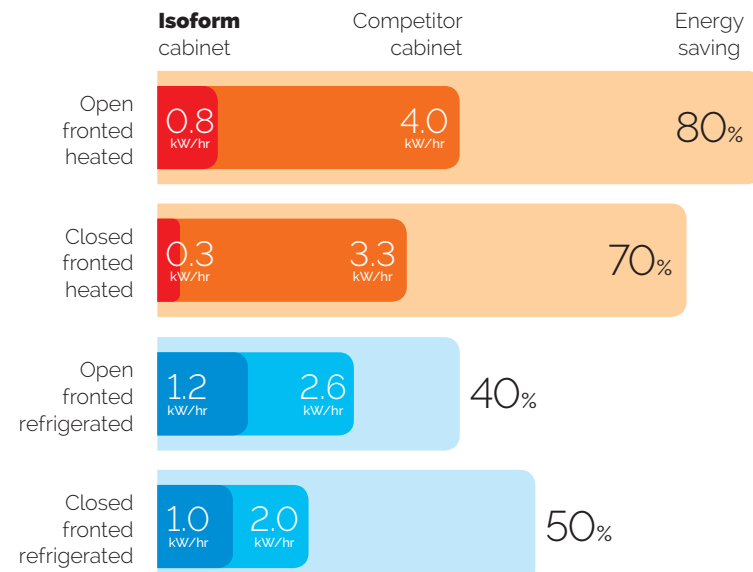
- On preventative maintenance: Save up to 90%
- On energy: Save up to 80%
- On spare parts: Save up to 60%

Increased shelf life

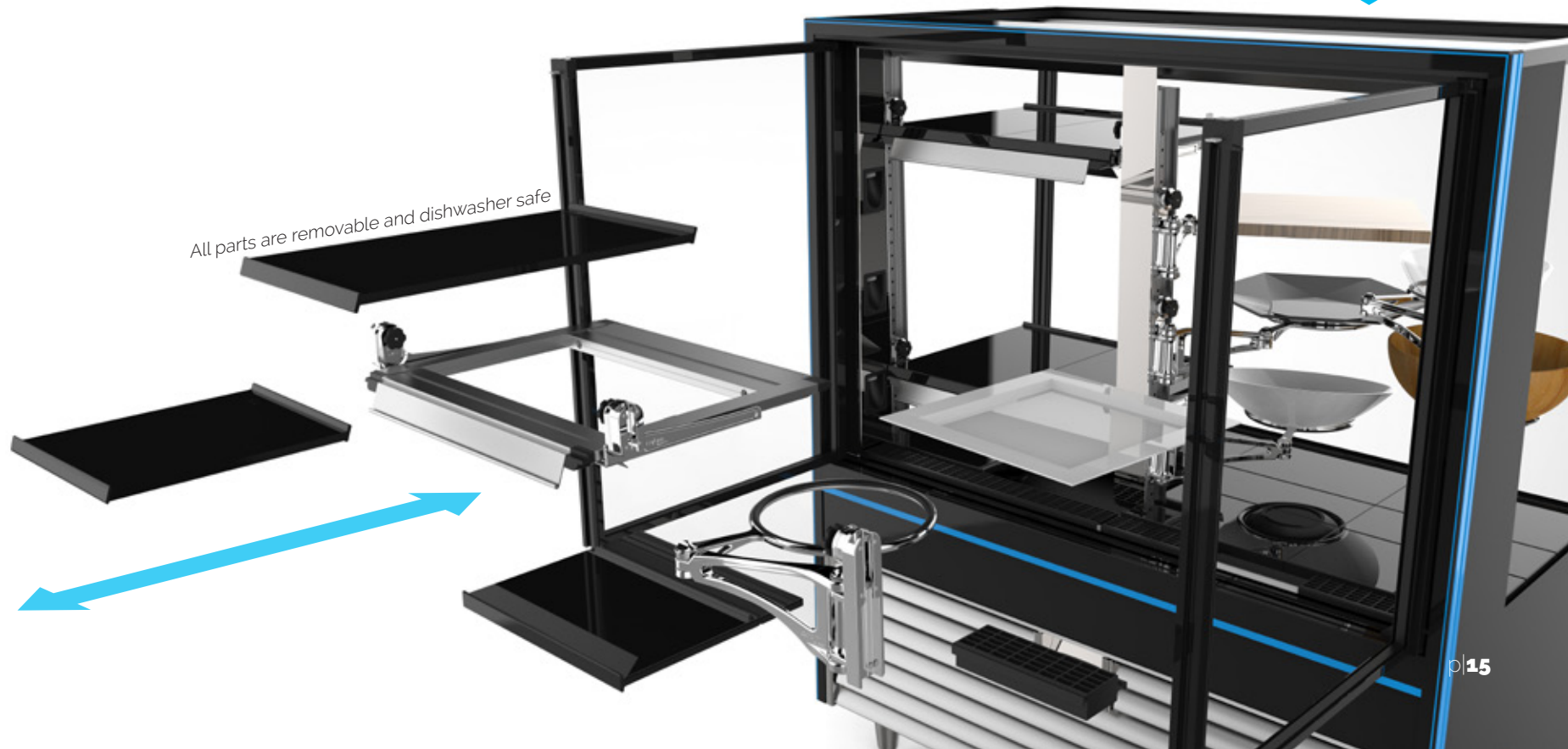
Isoform cabinets retain an ultra-high humidity of 80% within the display area. This will extend the shelf life of your products by up to 200%.

- Humidity: Up to 80%
- Shelf life increase: Up to 200%

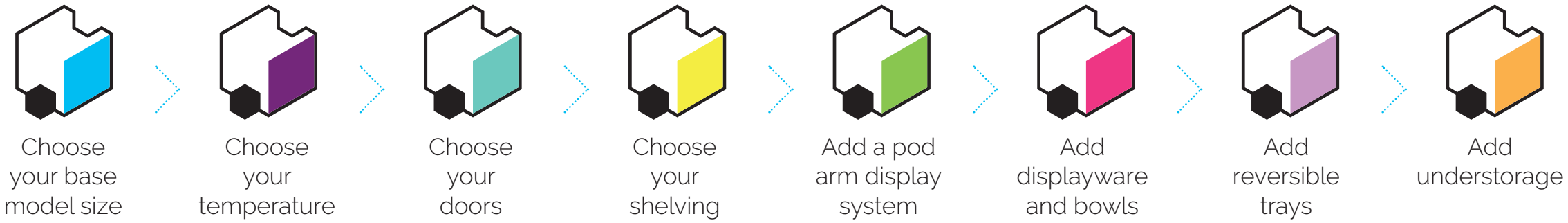
Low energy consumption. High energy savings.



All parts are removable and dishwasher safe



Isoform is a game-changing development in display systems. It's designed by you, changed by you, re-imagined by you.



ISOform
create something exceptional
by **FPG**

configure your display



All Isoform cabinets are available as
HEATED, REFRIGERATED
or
CONTROLLED AMBIENT

The Isoform Configurator App

Configure your next cabinet to exactly fit your requirements, with no compromises.

View the cabinet from all angles, open and close doors, swap pod arms for shelves.

Instantly see the display area and volume for each configuration you choose, and monitor how different doors openings and usage estimates will affect power consumption.

Create and test every single visual and functional aspect of the cabinet – ensure that it's perfect for you, and perfect for your customers.

Create something exceptional.

trusted worldwide

BUFFET



CONVENIENCE STORE



SPECIALITY FOODSERVICE



SUPERMARKET

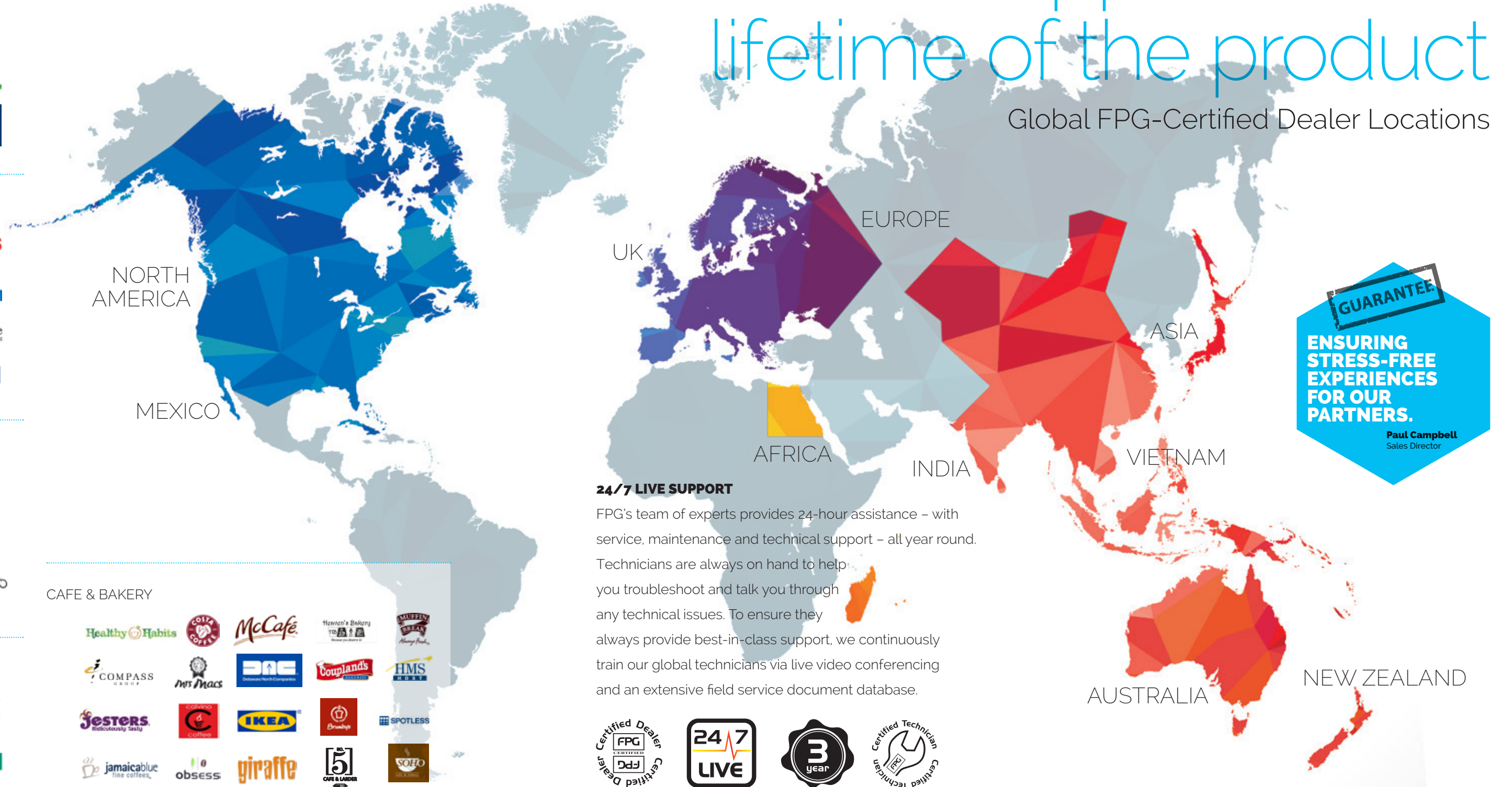


CAFE & BAKERY



unrivalled support for the lifetime of the product

Global FPG-Certified Dealer Locations



GUARANTEE
ENSURING STRESS-FREE EXPERIENCES FOR OUR PARTNERS.
 Paul Campbell
 Sales Director

24/7 LIVE SUPPORT

FPG's team of experts provides 24-hour assistance – with service, maintenance and technical support – all year round. Technicians are always on hand to help you troubleshoot and talk you through any technical issues. To ensure they always provide best-in-class support, we continuously train our global technicians via live video conferencing and an extensive field service document database.





Australia

Suite 6, Level 1
432 Chapel Road, Bankstown
NSW 2200
Australia
T 1800 813 745
F 1800 813 746
E ausales@fpgworld.com

China | Asia

Rm 104, Building 8
No.31 KaiXuan Road (S)
Shanghai 200232
P R China
T +86 21 3351 3390
F +86 21 3952 2356
E asales@fpgworld.com

Europe

Reitscheweg 1
5232 BX 's-Hertogenbosch
The Netherlands
www.foodequipmentconcepts.com
T +31 6 52 53 47 69
E info@feconcepts.eu

New Zealand

110 Austin Street
PO Box 3029
Napier, 4110
New Zealand
T +64 6 843 3249
F +64 6 843 2466
E nzsales@fpgworld.com

United Kingdom

Unit 6, Churchill House
114 Windmill Road
Brentford, Middlesex TW8 9NB
United Kingdom
T +44 845 485 9300
E uksales@fpgworld.com

GUARANTEE

**STANDING BY
EVERYTHING WE
SELL FOR ITS
LIFETIME.**

Robert Darroch
Managing Director
and CEO

ISOform
create something exceptional
by **FPG**

FPG Partner:

FPGWORLD.COM